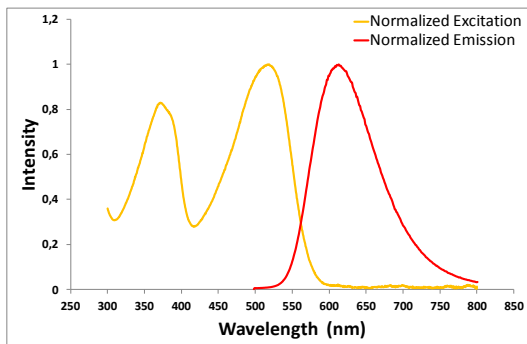


# AquiStain RED, Fluorescent Total Protein Stain

*New generation of fluorescent labels, non toxic, and more sensitive for identify and quantify low-abundance proteins.*

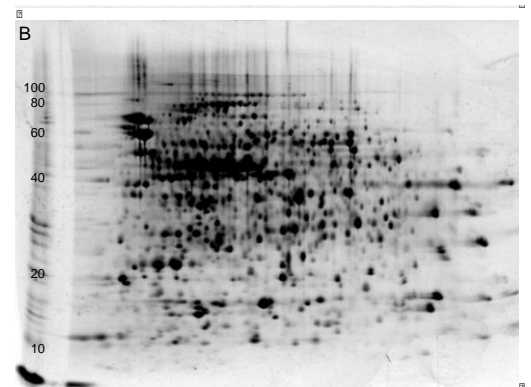
**AquiStain RED, Fluorescent Total Protein Stain** is the most sensitive fluorescent stain available for the detection of proteins separated by electrophoresis. This new fluorescent dye **AquiStain RED** is an excellent gel stain for 1D & 2D PAGE as well as being suitable for IEF.



Excitation and Emission Spectra of AquiStain RED with BSA

This synthetic dye binds covalently and reversibly to lysine, arginine and histidine residues in proteins and peptides to yield an intensely red-fluorescent light emission (excitation at 532 nm, emission at 610 m). This unique mechanism provides sensitive quantification of proteins in 1D and 2D gels of all chemistries, on both PVDF and nitrocellulose blots and provides unparalleled compatibility with Mass Spectrometry.

- ✓ **Flexible:** 1D or 2D electrophoresis gels, native or denatured; nitrocellulose and PVDF membranes.
- ✓ **Eco-friendly:** non-toxic dye, heavy metals free
- ✓ **Sensitivity:** up to 50 pg / spot of proteins detected
- ✓ **Compatible:** with MS, DIGE, Blot and Phosphoprotein
- ✓ **Wide dynamic range:** Linear quantification over 4-orders of magnitude
- ✓ **Low background**
- ✓ **Multiplex compatible:** with other fluorophores (e.g. Cy™ Dyes), other stains (e.g. Coomassie®, silver).



2D Gel Electrophoresis (pH 3-10) of the E. coli proteome, stained with AquiStain RED.

**AquiStain RED, 25 mL**, is sufficient for staining **fifty** SDS-PAGE mini-gels or **ten** full-size 2D gels.